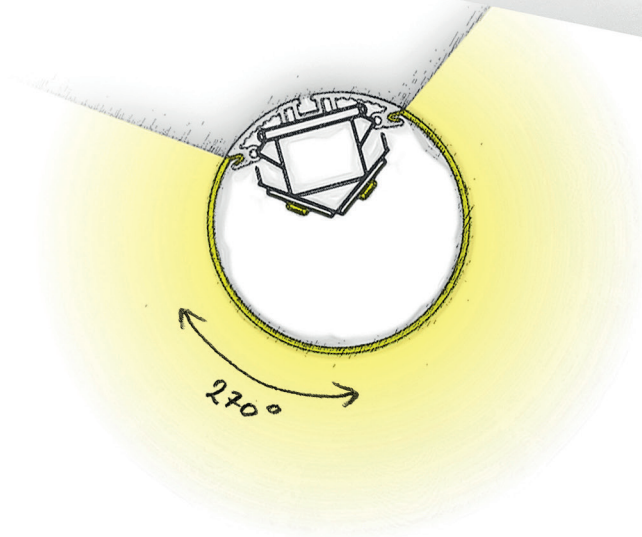
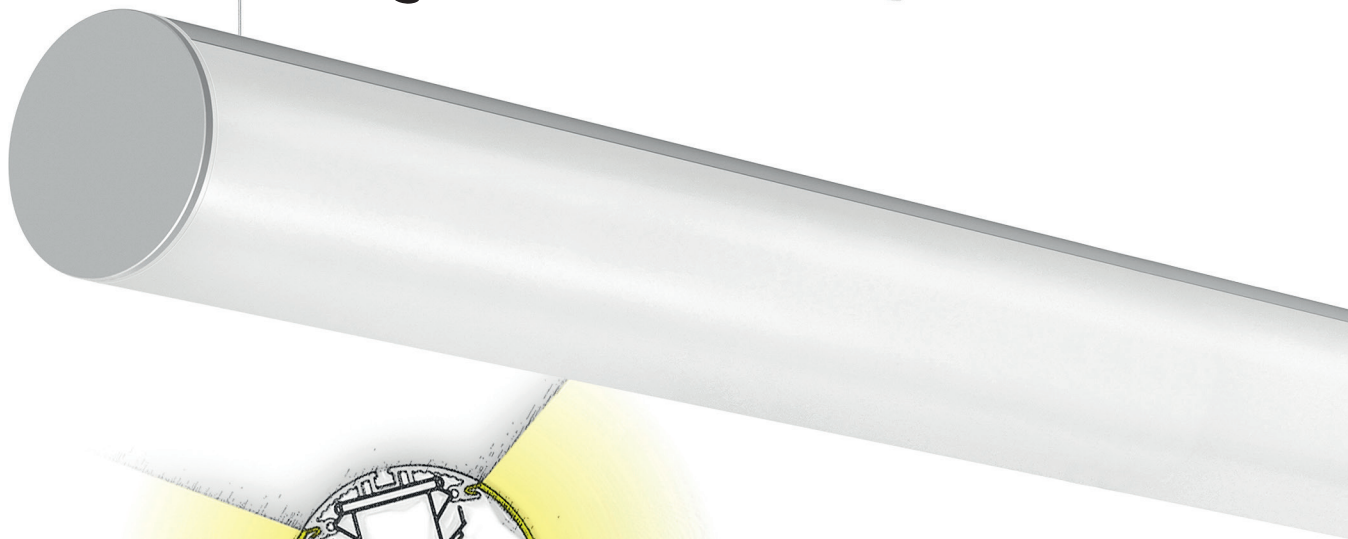




Talea




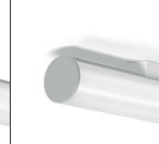










GRUPO INDELAGUE

INDELAGUE ROXO lighting



A S G A M A S

	G A M A T A L E A		G A M A T A L E A G l a r e	
				
	TALEA	TALEA Line	TALEA Glare	TALEA Glare / C
Tipo de Aplicação				
Distribuição de Luz				
Dimensões*	Ø100x598 mm Ø100x878 mm Ø100x1158 mm Ø100x1438 mm Ø100x1718 mm Ø100x1998 mm Ø100x2278 mm Ø100x2558 mm Ø100x2838 mm	Ø100x590 mm Ø100x870 mm Ø100x1150 mm Ø100x1430 mm Ø100x1710 mm Ø100x1990 mm Ø100x2270 mm Ø100x2550 mm Ø100x2830 mm	Ø100x878 mm Ø100x1158 mm Ø100x1438 mm Ø100x1718 mm Ø100x1998 mm Ø100x2278 mm Ø100x2558 mm Ø100x2838 mm	Ø100x878 mm Ø100x1158 mm Ø100x1438 mm Ø100x1718 mm Ø100x1998 mm Ø100x2278 mm Ø100x2558 mm Ø100x2838 mm
Sistema Ótico	bLINE ●		bLINE ● UGR ≤19	
Temperatura de Cor	3000K 4000K			
Acabamentos	Perfil: ● Anodizado		Topos: ○ Branco ● Cinzento ● Preto	
Caixas de Alimentação				--
Topos sem Parafusos	✓			
Kit de Emergência**	1 ou 3 Horas***		1 ou 3 Horas	

* Dimensões meramente indicativas. Para as dimensões detalhadas, por favor consultar o nosso website ou catálogo em vigor.

** Kit de emergência de 1 ou 3 horas não está disponível para as versões de 598/878mm.

*** Kit de emergência de 1 ou 3 horas apenas disponível para a versão HF. Telecomando não está disponível.

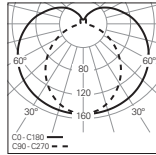
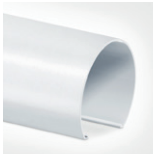
CRIE ESPAÇOS
ATRAVÉS DA LUZ

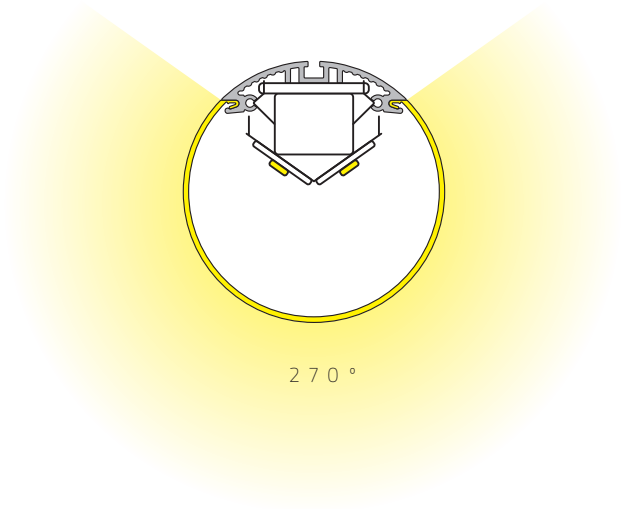




SISTEMA ÓTICO

bLINE

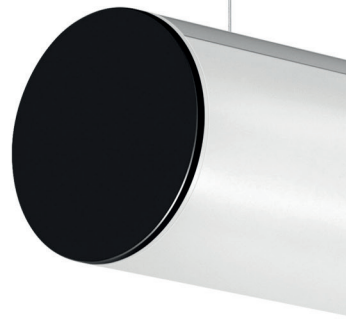




270°

Mostrado no tamanho real

ACABAMENTOS



PERFIL

ALUMÍNIO ANODIZADO

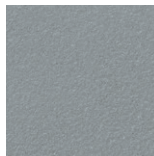


TOPOS

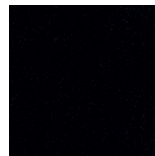
BRANCO

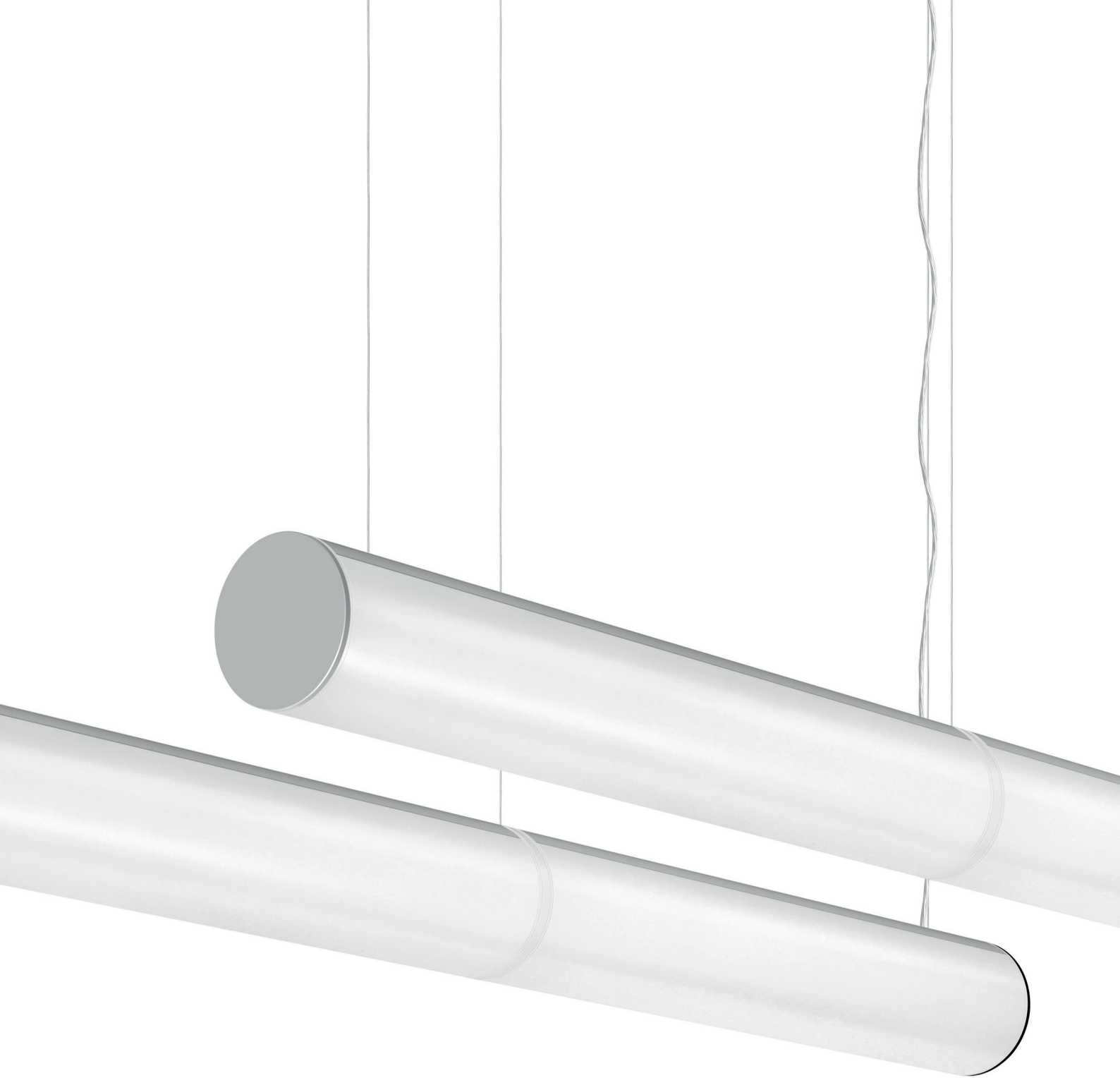


CINZENTO



PRETO









G A M A
T A L E A

TALEA
TALEA Line
Suspense



A G A M A



SALIENTE

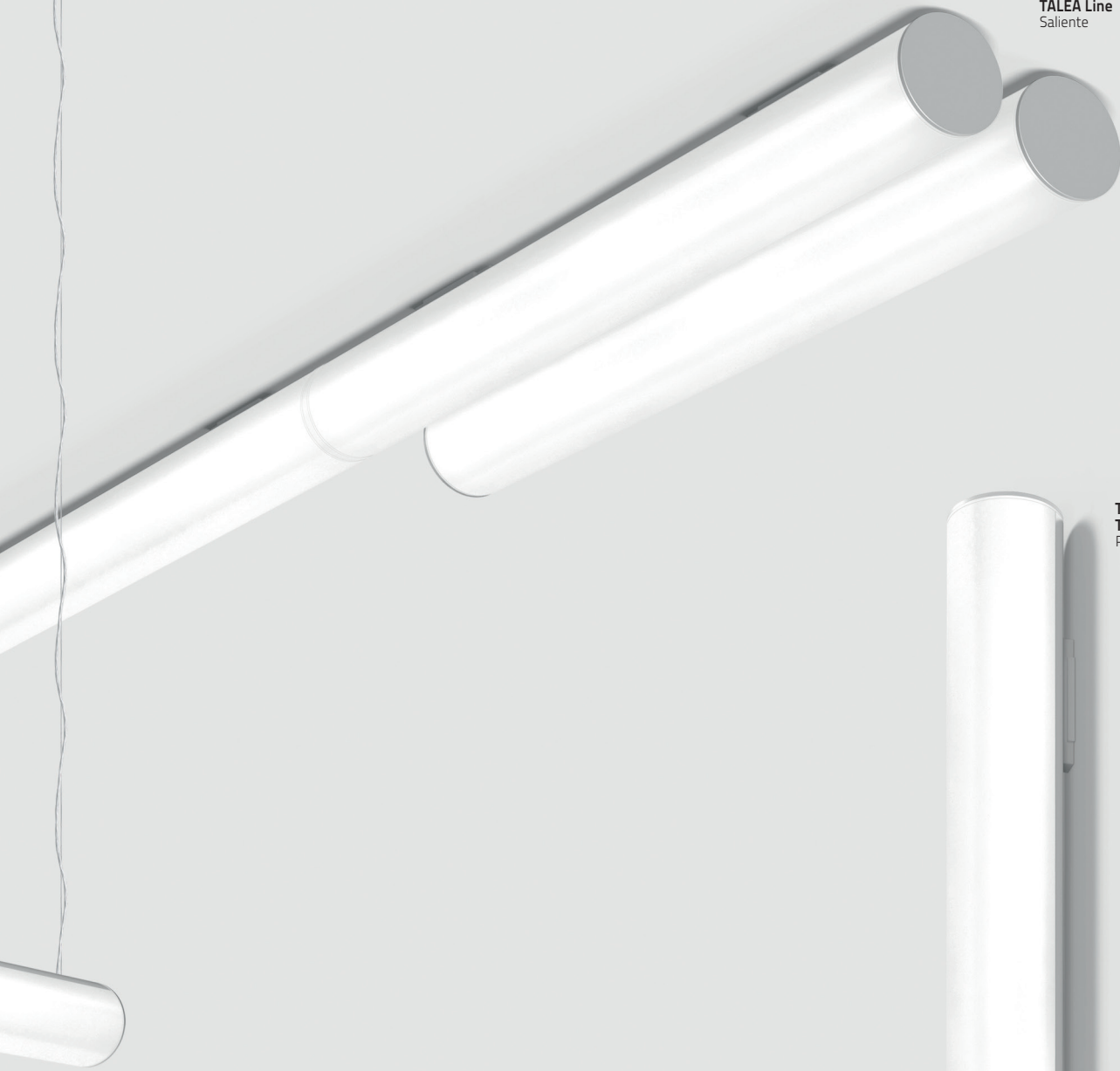


SUSPENSO



PAREDE

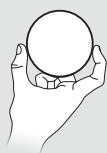
TALEA
TALEA Line
Saliente



TALEA
TALEA Line
Parede



— TAMANHO
DISPONÍVEL —

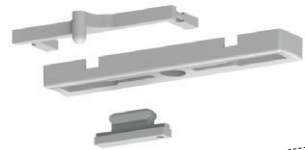


Ø 100 mm

TALEA
CARACTERÍSTICAS / COMPONENTES



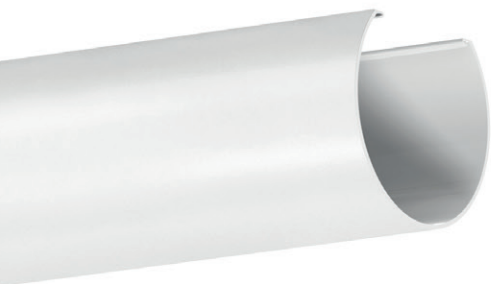
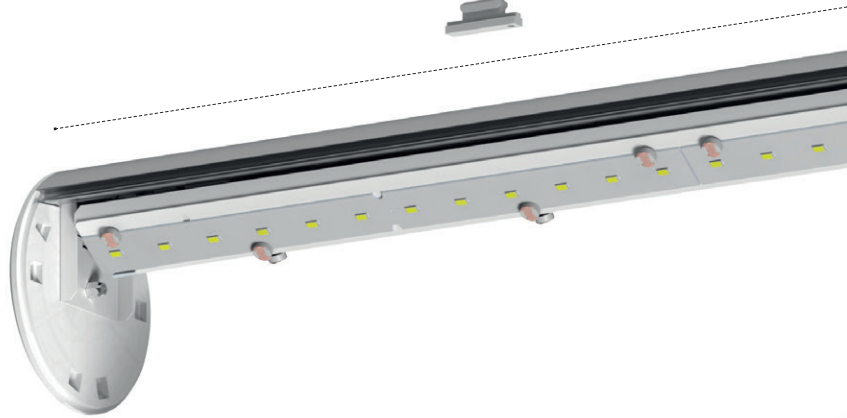
SISTEMA DE
FIXAÇÃO
SALIENTE/PAREDE



UNIÃO PARA
LINHA CONTÍNUA
COM CONETOR



MÓDULOS
INTERMÉDIOS E
DE FIM DE LINHA



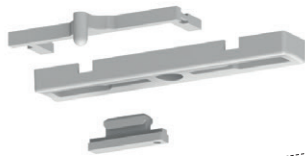
CAIXA DE ALIMENTAÇÃO DE ENCASTRAR



CAIXA DE ALIMENTAÇÃO SALIENTE



CABO DE ALIMENTAÇÃO TRANSPARENTE



2830mm máx.

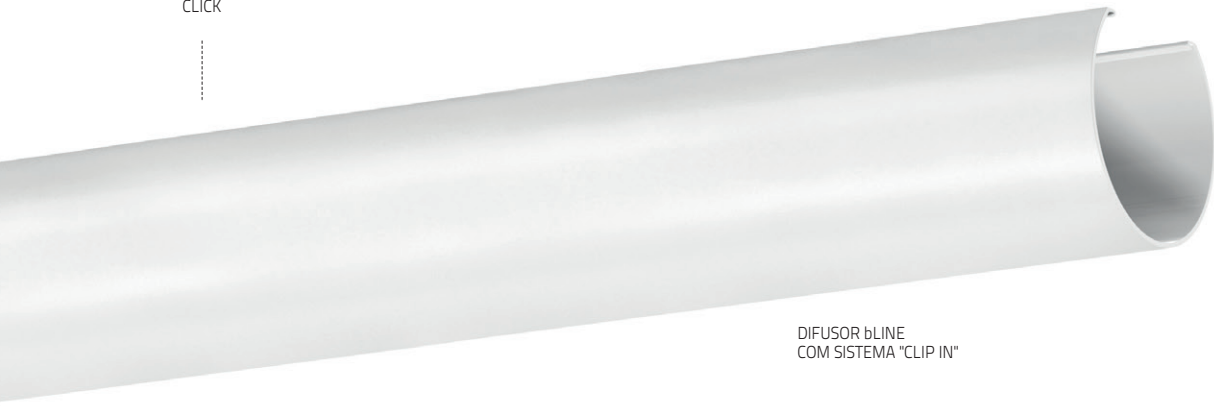
TOPOS SEM PARAFUSOS



MÓDULOS DE INÍCIO

CLICK

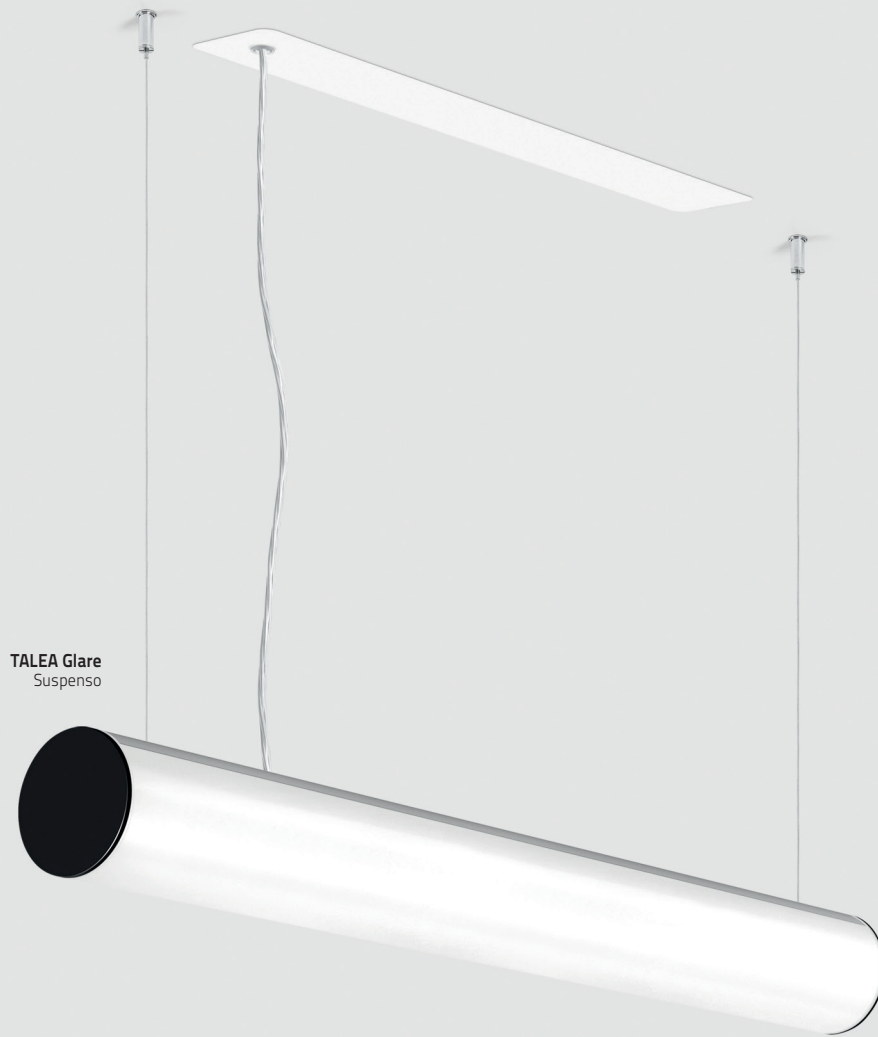
DIFUSOR bLINE COM SISTEMA "CLIP IN"







G A M A
TALEA Glare



TALEA Glare
Suspenso

A G A M A



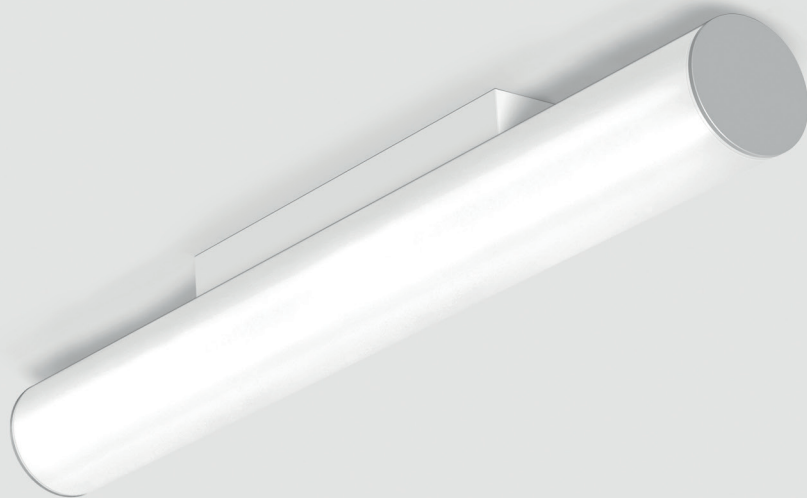
SALIENTE



SUSPENSO



PAREDE

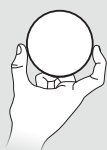


TALEA Glare /C
Saliente



TALEA Glare /C
Parede

TAMANHO
DISPONÍVEL



Ø 100 mm

TALEA Glare
CARACTERÍSTICAS / COMPONENTES



CAIXA DE ALIMENTAÇÃO DE ENCASTRAR

CAIXA DE ALIMENTAÇÃO SALIENTE

CABO DE ALIMENTAÇÃO TRANSPARENTE

TOPOS SEM PARAFUSOS

2830mm máx.

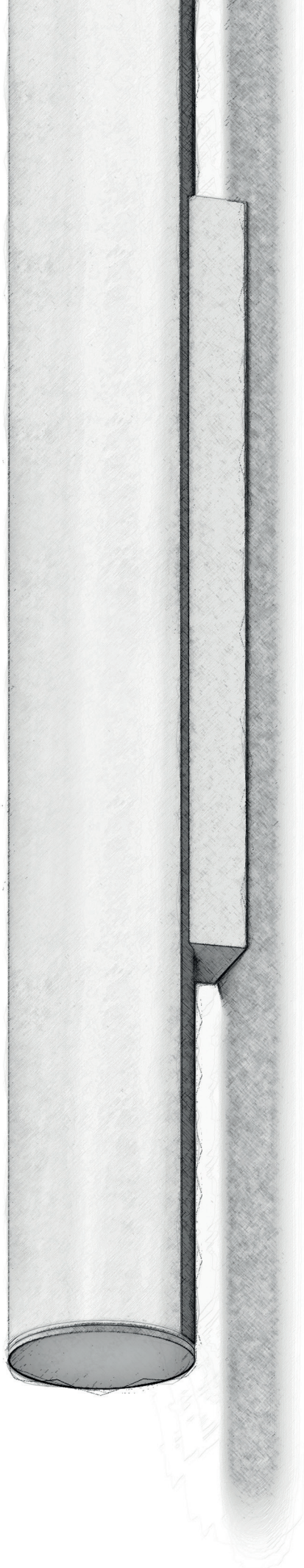
CLICK

DIFUSOR bLINE COM SISTEMA "CLIP IN"









GRUPO
INDELAGUE

SEDE

INDÚSTRIA ELÉTRICA DE ÁGUEDA S.A.
Rua da Mina 465 | Covão
Zona industrial EN1 Norte
Apartado 106 / 3754-909
3750-792 Trofa
ÁGUEDA | PORTUGAL
GPS. 40°36'5.84"N 8°27'4.38"W
T. +351 234 612 310 | F. +351 234 624 058
indelague@indelague.pt
WWW.INDELAGUE.COM

REINO UNIDO

ROXO LIGHTING LIMITED
roxo.london@roxolighting.com
WWW.ROXOLIGHTING.COM

ESPAÑA

INDELAGUE ESPAÑA, S.L.
Avenida del Ejército, nº 8 - 1º C
C.P. 15006 | A CORUÑA | ESPAÑA
comercial@indelague.com
WWW.INDELAGUE.COM

Todos os dados contidos nesta brochura não constituem nenhum compromisso por parte da INDELAGUE - Indústria Eléctrica de Águeda, SA., o que lhe reserva o direito de efectuar as modificações que considere oportunas, sem aviso prévio. É interdita a reprodução desta brochura, ainda que parcial. Dados eléctricos/ópticos sujeitos a tolerância de +/- 10%. Temperatura de cor sujeita a tolerância de +/- 150K, excepto quando claramente especificado. Todos os valores se aplicam a uma temperatura ambiente de 25° C.

Cofinanciado por:



UNIÃO EUROPEIA
Fundo Europeu
de Desenvolvimento Regional