



# Noah



GRUPO INDELAGUE

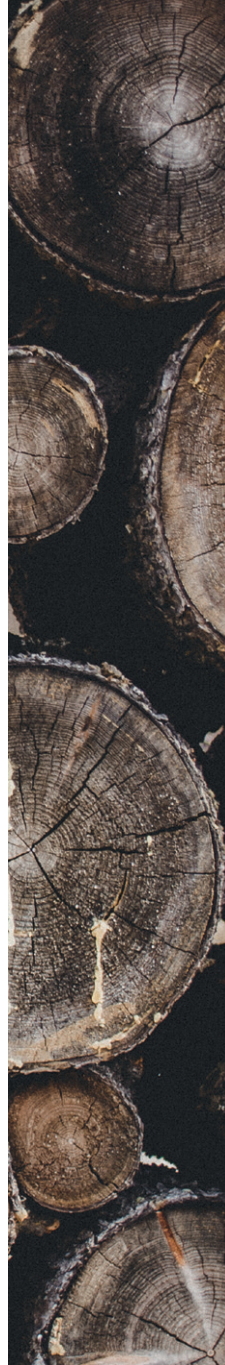
**INDELAGUE** ROXO lighting

CONCEITO E INSPIRAÇÃO

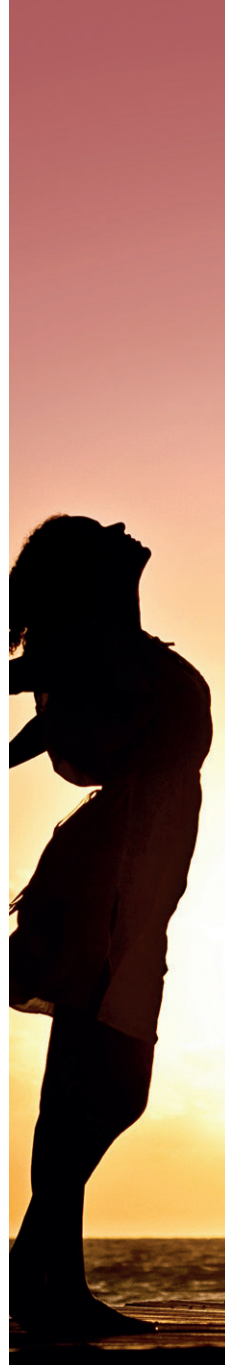
ARCA DE NOÉ NO DILÚVIO DE GÊNESIS



MADEIRA



AMBIENTE CALMO E ACOLHEDOR





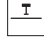




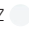








N O A H





# A G A M A

G A M A N O A H			
			
	NOAH	NOAH / D	NOAH / F
Tipo de Aplicação			
Distribuição de Luz			
Dimensões	Ø 650x20 mm	Ø 250x26x356 mm	Ø 400x26x1800 mm
Sistema Ótico	DAZ 		
Temperatura de Cor	3000K 4000K	2700K 4000K	3000K 4000K
Acabamentos	 Rosewood  Branco  Cinzento  Preto		
Caixas de Alimentação		--	
Tecnologia e Inovação		--	

G A M A  
N O A H

NOAH  
Suspenso  
Indireta



---

A G A M A

---



NOAH



NOAH /D



NOAH /F

---



**NOAH /F**  
De Pé  
Orientável  
Indireta



**NOAH /D**  
De Mesa  
Orientável  
Direta

TAMANHOS  
DISPONÍVEIS



Ø 650 mm



Ø 250 mm



Ø 400 mm

# ACABAMENTOS

ROSEWOOD



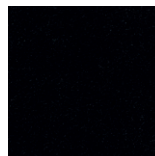
BRANCO



CINZENTO



PRETO

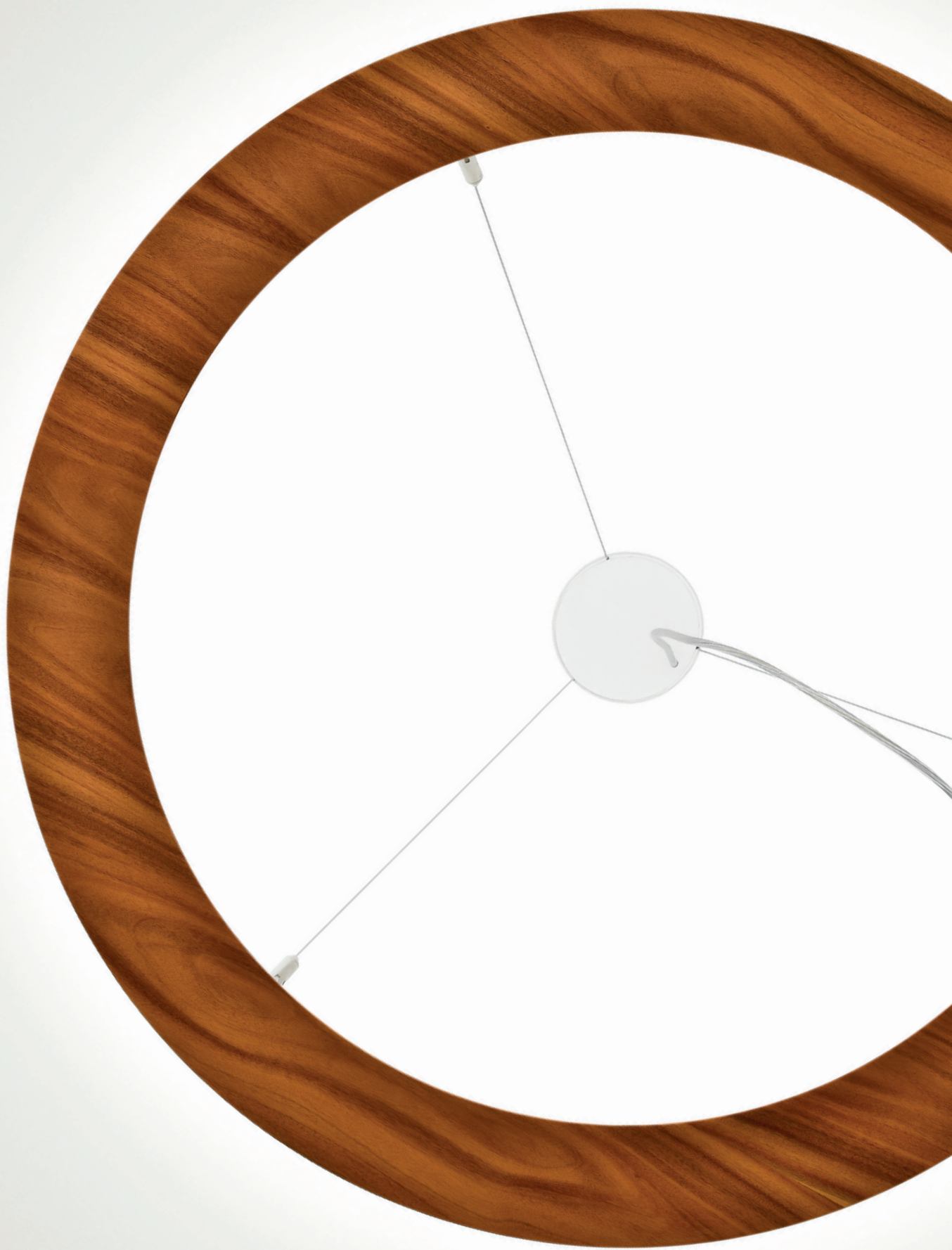






S U S P E N S O









ORIENTÁVEL  
DE MESA





ORIENTÁVEL  
DE PÉ













GRUPO  
INDELAGUE

**SEDE**

INDÚSTRIA ELÉTRICA DE ÁGUEDA S.A.  
Rua da Mina 465 | Covão  
Zona industrial EN1 Norte  
Apartado 106 / 3754-909  
3750-792 Trofa  
ÁGUEDA | PORTUGAL  
GPS: 40° 36'5.84"N 8° 27'4.38"W  
T. +351 234 612 310 | F. +351 234 624 058  
indelague@indelague.pt  
WWW.INDELAGUE.COM

**REINO UNIDO**

ROXO LIGHTING LIMITED  
roxolondon@roxolighting.com  
WWW.ROXOLIGHTING.COM

**ESPAÑA**

INDELAGUE ESPAÑA, S.L.  
Avenida del Ejército, nº 8 - 1º C  
C.P. 15006 | A CORUÑA | ESPAÑA  
comercial@indelague.com  
WWW.INDELAGUE.COM

Todos os dados contidos nesta brochura não constituem nenhum compromisso por parte da INDELAGUE - Indústria Eléctrica de Águeda, SA., o que lhe reserva o direito de efectuar as modificações que considere oportunas, sem aviso prévio. É interdita a reprodução desta brochura, ainda que parcial. Dados eléctricos/óticos sujeitos a tolerância de +/- 10%. Temperatura de cor sujeita a tolerância de +/- 150K, excepto quando claramente especificado. Todos os valores se aplicam a uma temperatura ambiente de 25°C.

Cofinanciado por:

